

## Features:

- InGaAsP/InP MQW FP laser diode
- PIN diode receiver with high sensitivity
- Wild oprating temprature:-40~85 °C
- SC Receptacle Connector
- Data rate up to 1.25Gb/s
- ROHS Complaint



## Application:

- 1.25Gbps Bit Rate application
- Single-mode 1310nm application

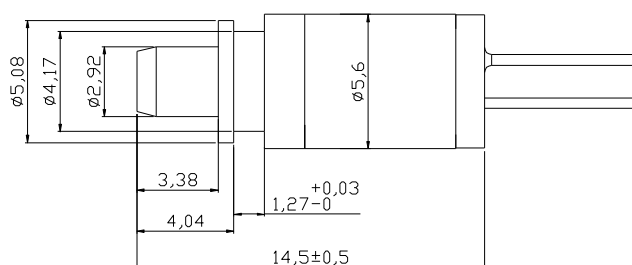
## Electro-Optical Characteristics (T=25°C)

Parameter	Symbol	Unit	min	Typ	Max	Note
Threshold Current	I <sub>th</sub>	mA		10	15	T=25°C
				30	50	T=85°C
Optical Output Power	P <sub>o</sub>	mW	0.1		0.7	I <sub>th</sub> +20mA
Forward Voltage	V <sub>f</sub>	V		1.2	1.6	I <sub>th</sub> +20mA
Peak Wavelength	λ <sub>p</sub>	nm	1290	1310	1330	T=25°C
			1260	1310	1360	T=-40~85°C
Spectral Width (RMS)	Δλ	nm		1	3	I <sub>th</sub> +20mA
Rise Time	t <sub>r</sub>	psec.		150	300	I <sub>b</sub> =I <sub>th</sub> , 20%-80%
Fall Time	t <sub>f</sub>	psec.		150	300	I <sub>b</sub> =I <sub>th</sub> , 80%-20%
Monitor Current	I <sub>m</sub>	μA	100	200	400	V <sub>r</sub> =5V

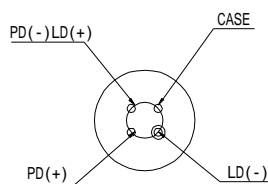
## Absolute Maximum Ratings

Parameter	Symbol	Min	Max	Unit

Storage Temperature	$T_S$	-40	85	$^{\circ}\text{C}$
Operating Temperature	$T_o$	-40	85	$^{\circ}\text{C}$
Storage Relative Humidity	$\text{RH}_S$	-	95	%
Lead Solder Temperature	$T_{\text{SLD}}$	-	260	$^{\circ}\text{C}$
Lead Solder Duration	$t_{\text{SLD}}$	-	10	s
Continuous Optical Output Power	$P$		120	mA
Laser Continuous Forward Current	$I$		2	mA
Laser Diode Reverse Voltage	$V_r$		2	V
PD Reverse Voltage	$V_r$		15	V



Unit: mm



Bottom View